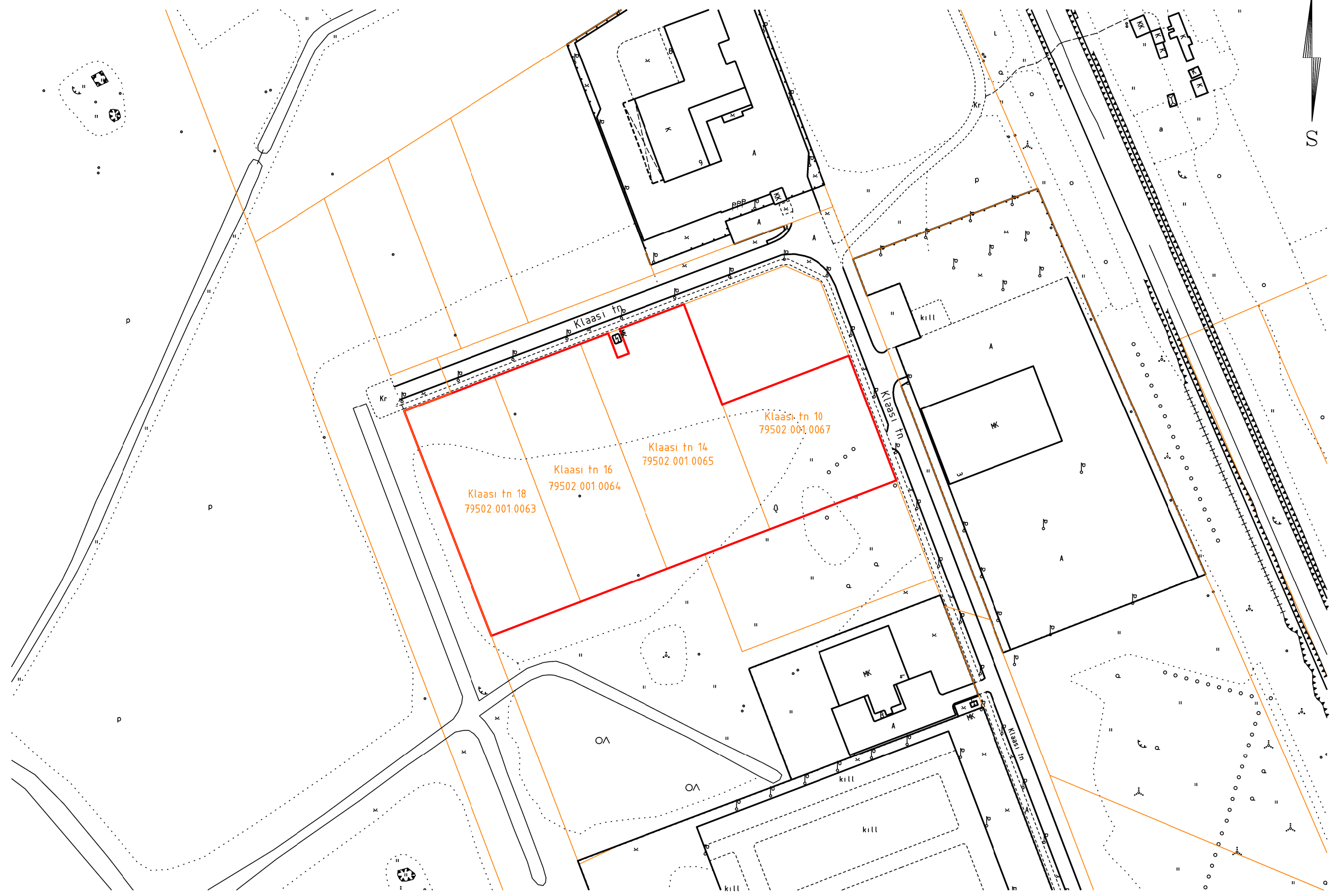
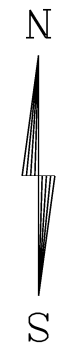




# Klaasi tn 10, Klaasi tn 14, Klaasi tn 16, Klaasi tn 18 ühendamise projektplaan

M 1: 2000



-  Olemasolev katastriüksuse piir
-  Moodustatava katastriüksuse piir, pindalaga ligikaudu 22244 m<sup>2</sup>

Koostas: LPMKO geodeesia teenistuse  
maakorraldaja Marju Kiisla  
10.03.2015